

• Seoul Life Guide •

SEOUL



PLAYLIST

SEOUL



PLAYLIST

Living

1

Prologue

04



Living like a local in Seoul

🔊 Welcome	Starting your life in Seoul!	08
🏠 Housing	Picking your residence!	10
🚉 Transit	Getting around via public transportation!	12
🚲 Convenience	Getting around via public bike share!	14
📖 Education	Learning the Korean language is easy!	18
📶 Digital City	Freedom to connect —anytime, anywhere!	20
🚌 Smart City	Citywide smart mobility bus service!	22
🌍 Environment	Participate in eco-friendly campaigns!	26
🛡️ Public Safety	Feel at ease when returning home!	28
💖 Public Health	Stay healthy with smart healthcare!	30



Enjoying

2

Enjoying attractions in Seoul

🏛️ City Square	Relaxing in downtown!	34
🏰 Royal Palaces	Time travel to the past!	36
🏛️ Museums	All about Seoul from history to culture!	38



Annex

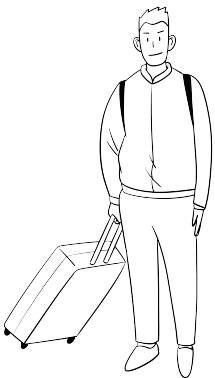
3

Annex

📄 Information	Global Center Contact List	66
	Immigration Contact Center	67
	Transportation Cards	68
	Ttareungi Public Bike Share	69
	Information: Parks	70
	Information: Palaces	71
	Information: Museums	72
	Information: Traditional Markets	74
	Information: Festivals	75

🌊 Hangang River	Explore and enjoy the Hangang River!	40
🏘️ Traditional Markets	Feel the warm embrace of Koreans!	44
📍 Trendy Places	The fountain of youth at Hongdae!	46
	Famous spots across the city!	48
👗 Fashion & Beauty	Mecca of fashion and style!	50
🍽️ Food	Taste the gourmet foods of Seoul!	54
🎉 Festival	Enjoy the lively fragrance of spring!	56
	Watch beautiful fireworks over the night sky!	58
	Be mesmerized by the colorful cityscape!	60

Welcome to Seoul!



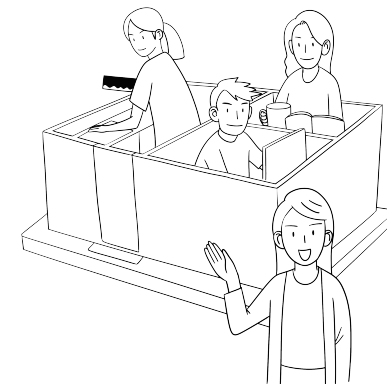
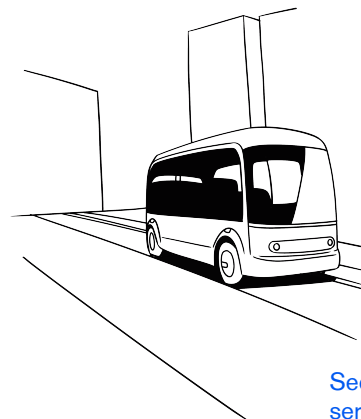
Seoul, the capital of the Republic of Korea, is a metropolitan city that is home to about one-fifth of the country's entire population. Accordingly, Seoul is an industrial and financial hub that is one of the most high-ranking influential cities in the world. Moreover, Seoul is also the center of Korean culture that has recently been gaining global attention. As such, Seoul is taking a great leap to become a global leader in various fields, including culture, economy, and IT.

Then, how welcoming is Seoul for international tourists and immigrants?



Seoul is a city that provides diverse services for a better life. It is equipped and prepared with convenient systems in a variety of fields, including administration, transportation, communications, and culture. Those who visit Seoul can get diverse information they need for daily life through the Seoul Foreigner Portal and Immigration Contact Center as well as take free Korean language classes.

Seoul is also a city of high housing satisfaction among foreigners. At a sharehome, you can benefit from a relatively low rent and experience Korean culture through social exchanges with various guests.



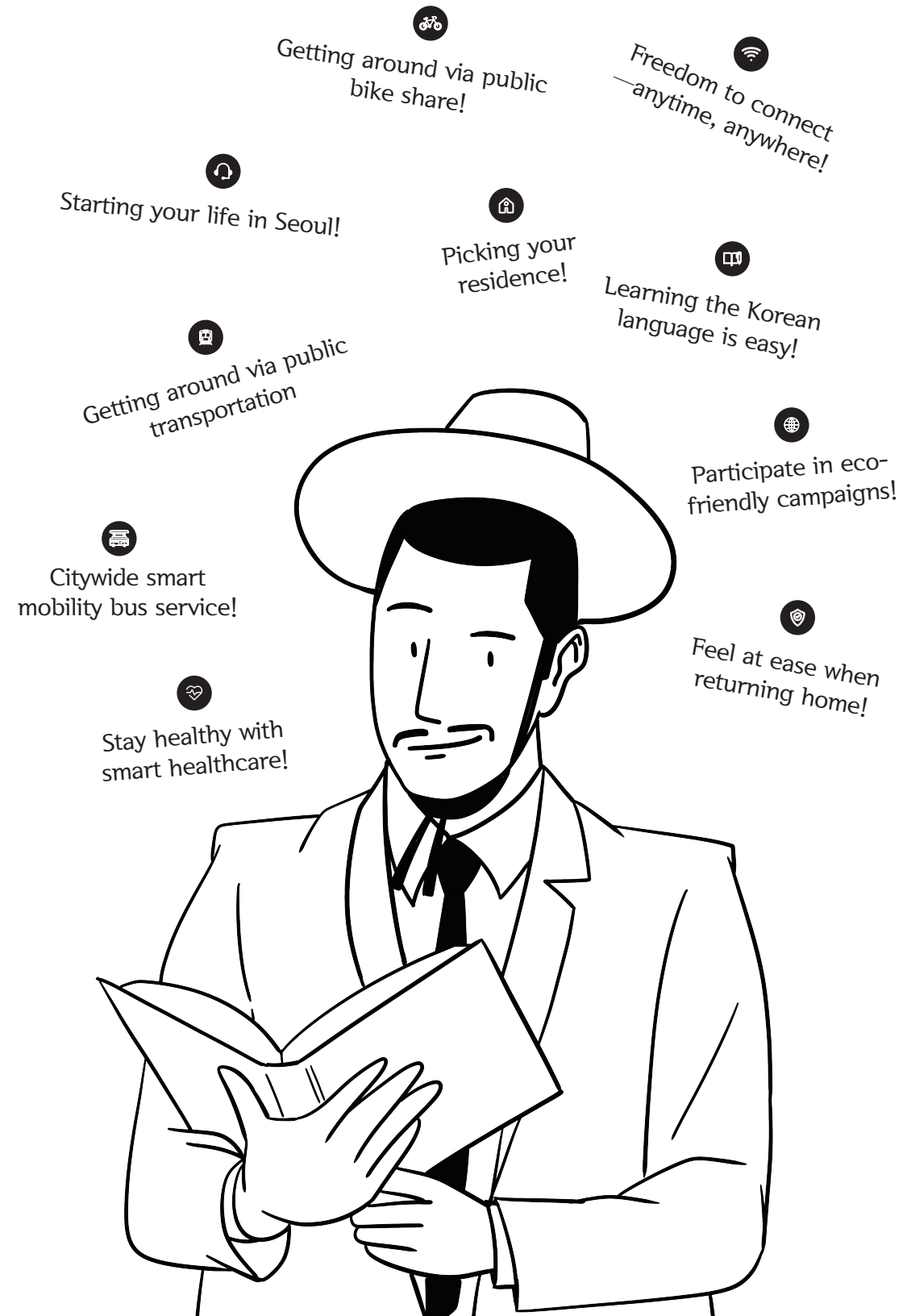
Seoul is a smart city with well-equipped IT infrastructure and services. According to the Smart Cities Index Report, it was ranked first in urban intelligence and infra integration and second in urban openness. Seoul ensures the freedom to connect via free WiFi, and bus stop displays show real-time transit information for convenient use of public transportation. Various IT-based facilities for living convenience are free to use as well. True to its name as one of the safest cities in the world, Seoul provides 24/7 safety service for commuters.

What makes Seoul special and beyond being convenient is that it preserves the merits of harmony and coexistence. As the center of Korean culture, Seoul is an attractive city where tradition and modernity as well as nature and urban are in harmony. You can experience Korean history and culture in depth by visiting four major palaces as well as museums in Seoul. Colorful city streets also let you immerse yourself in Korean culture. Along the broad banks of the Hangang River that runs across the city, there are a great number of spaces where you can enjoy your free time in nature. The mountains surrounding Seoul are great for hiking and there are urban forest trails to relish nature.

Seoul harmonizes tradition and modernity, nature and city, and people and culture. It is developing with citizens based on its value of pursuing coexistence and sensitivity to become an attractive city. Going beyond the territory of Korea, Seoul provides you with a space of happiness as your reliable partner.

Living like a local in Seoul

1



New to Seoul? Then, visit the Visit Seoul website! Here, you can get all the information you need about living and traveling in Seoul from accommodations and attractions to events, festivals, restaurants, and more. It's perfect if you are planning a trip to Seoul and want a full experience—you can download guidebooks and maps as well as get recommendations on various themed tour courses for free.

Have any questions or difficulties about living in Seoul? Then, visit the Seoul Foreigner Portal website! Operated by the Seoul Metropolitan Government, you can get assistance and various essential information for living in Seoul. Also, it has detailed information on the locations and hours of the Seoul Global Center where you can receive multilingual consultation and civil complaint services provided in English, Chinese and Japanese. You can also receive assistance for Korean language education, cultural experience, and COVID-19 response.

Take your first step to living like a local in Seoul by accessing the Visit Seoul and Seoul Foreign Portal websites, and get various information and benefits provided by Seoul.



Visit Seoul

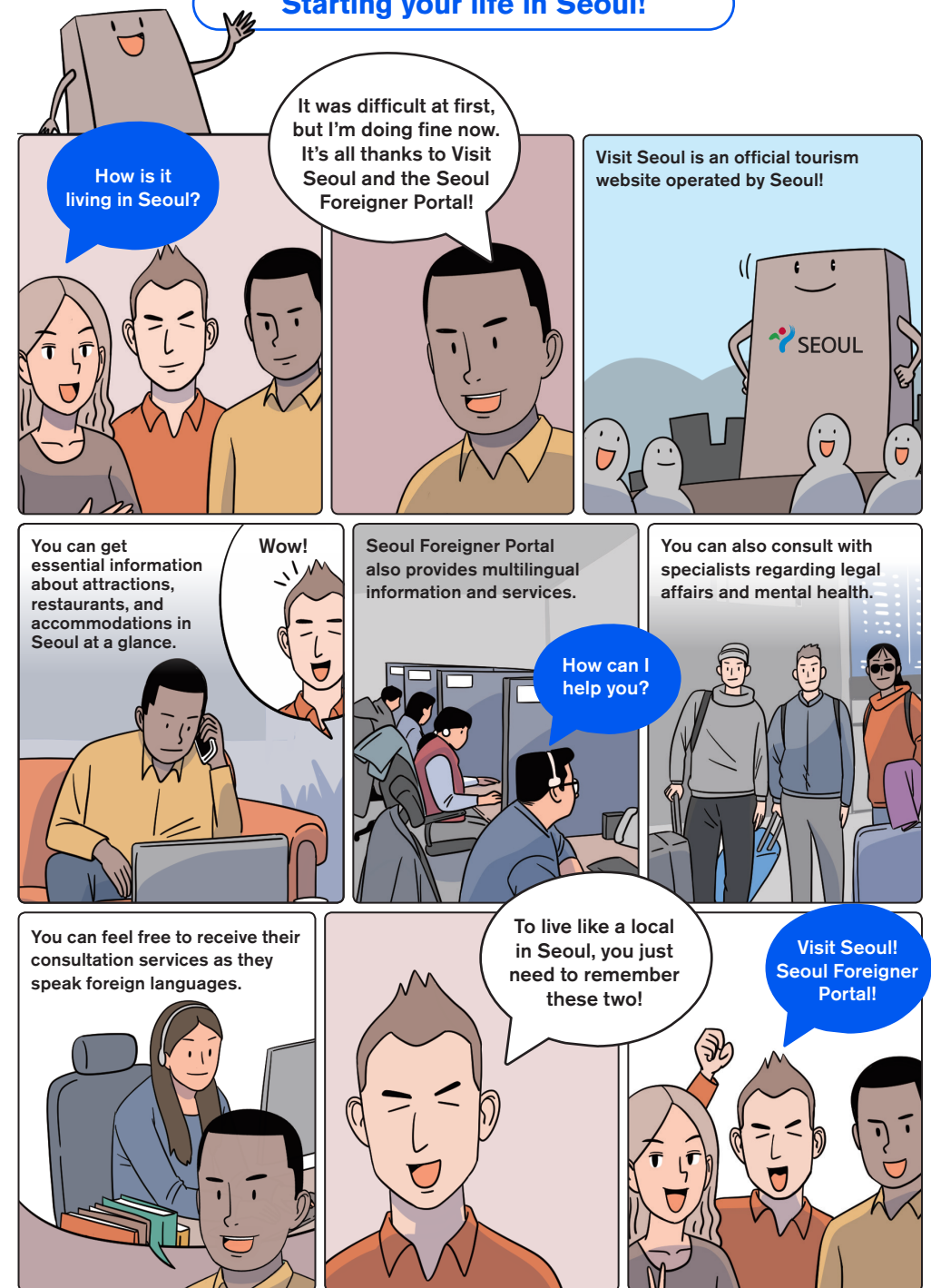


Seoul Foreigner Portal



☞ p.66 Annex : Global Center Contact List

Starting your life in Seoul!



Starting your life in Seoul!

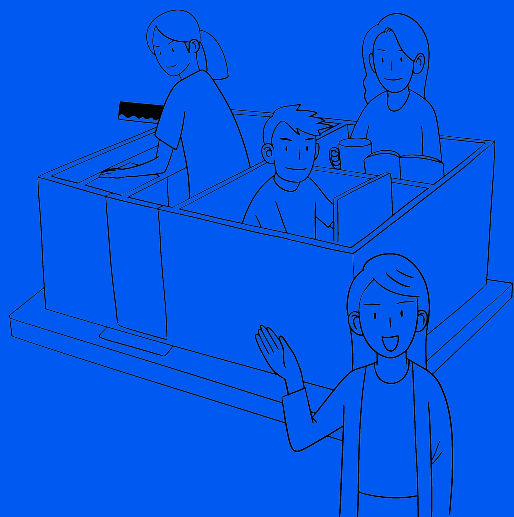
Seoul is home to a population of nearly 10 million with a wide variety of housing options available, varying depending on the purpose and period of your visit.

If you are looking for a type of residence where you can stay with friends from various countries at a relatively low rental, your best choice would be a sharehome. Sharehome is a co-living residence that accommodates a number of persons with shared spaces, such as living room, bathroom, and kitchen. You can choose one to your preference, considering the location, type, and expenses.

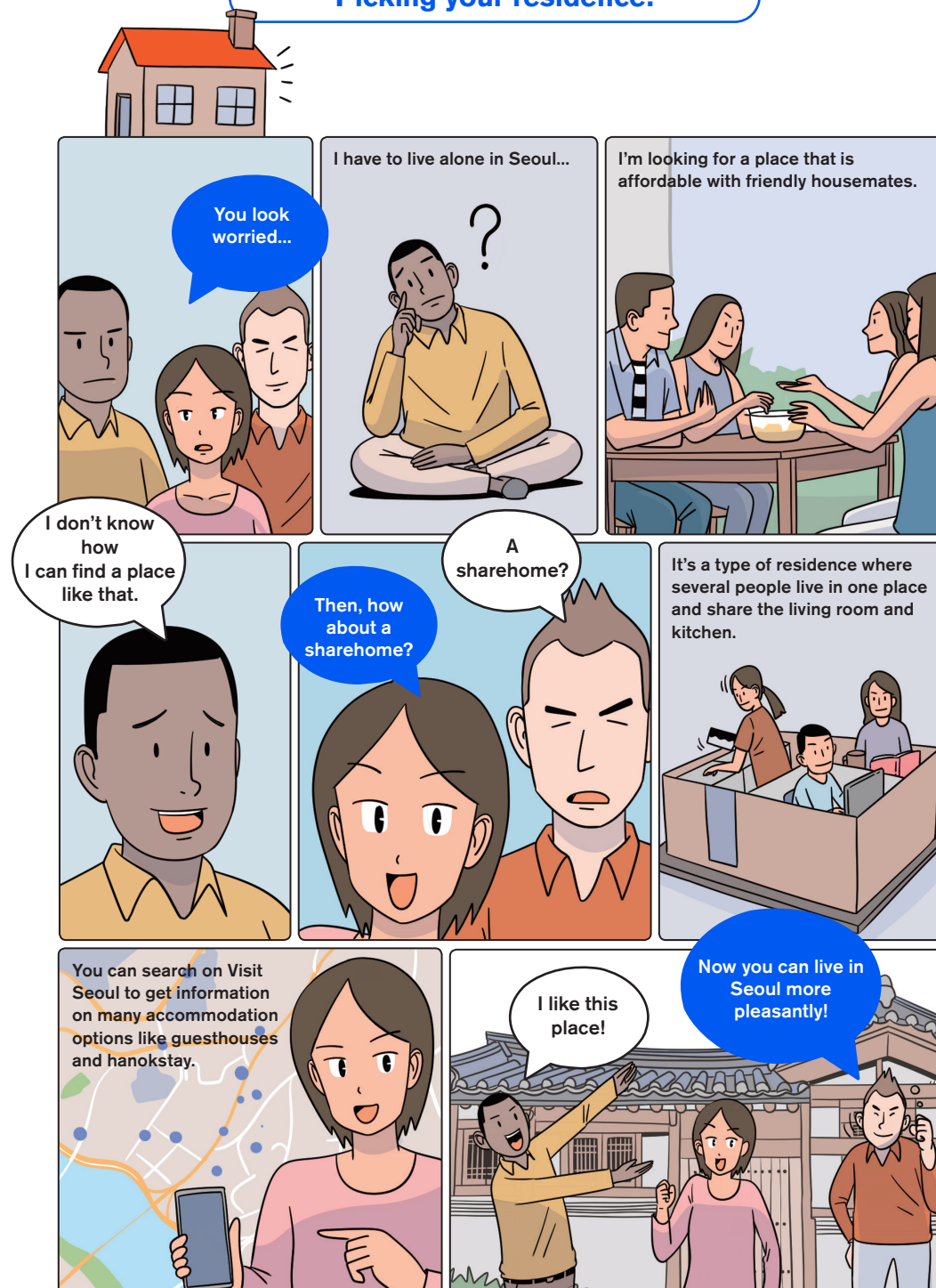
There are also accommodations in the form of homestay where you can experience Korean family culture. Homestay is a great opportunity to stay in a residential guesthouse. In particular, there is also the highly popular hanokstay where you can experience Korea's traditional architecture and domesticity.

You can easily get related information by searching "sharehome" or "guesthouse" online via the Visit Seoul website or related travel app. Sharehomes and guesthouses are great if you want to directly experience Korean culture while meeting new people and making memories in Seoul.

Picking your residence!



Picking your residence!



Seoul is a city with a highly developed public transportation system, including buses and subways. Public transportation in Seoul connects the entire city, enabling you to travel to wherever you want to go easily and quickly,

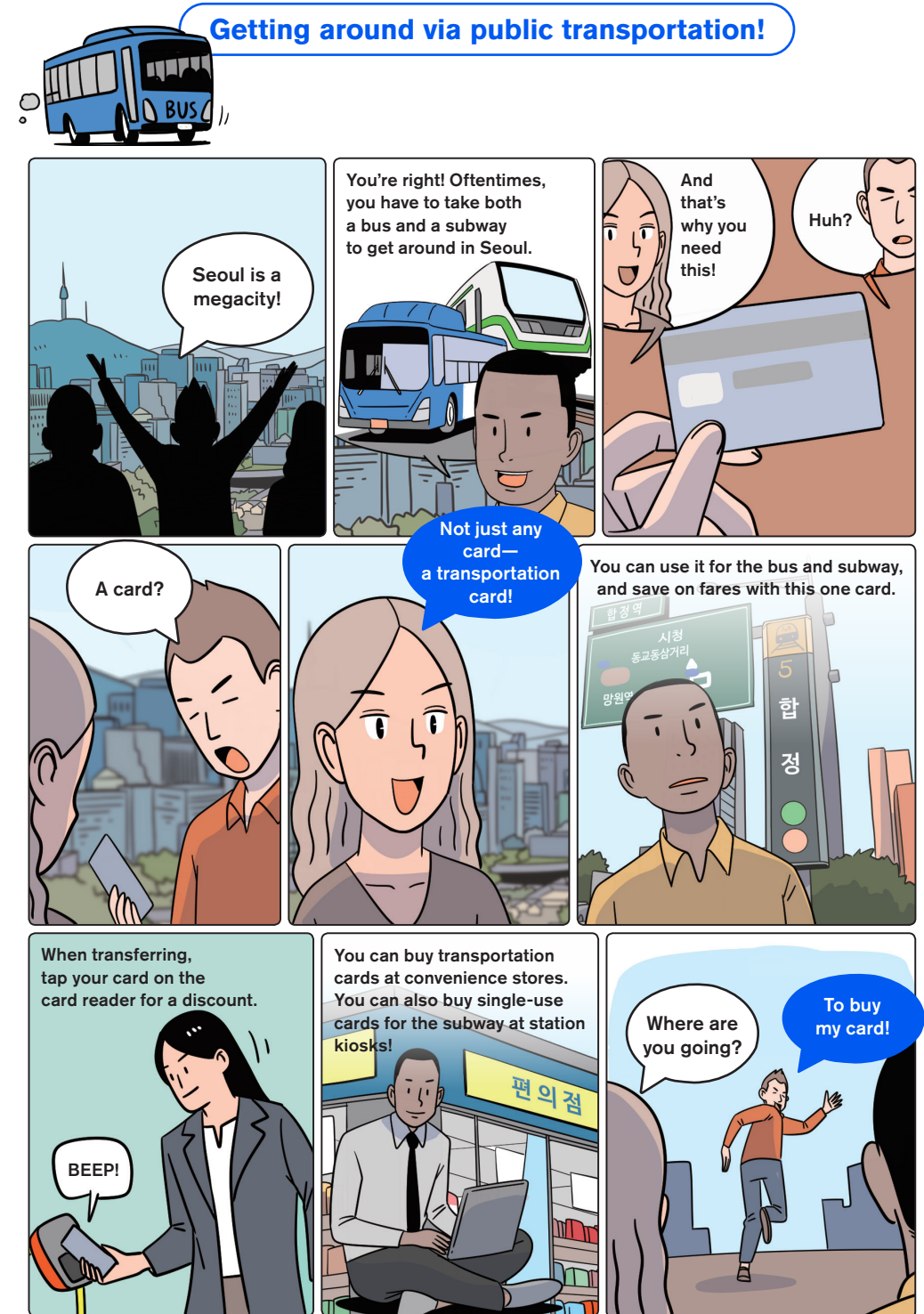
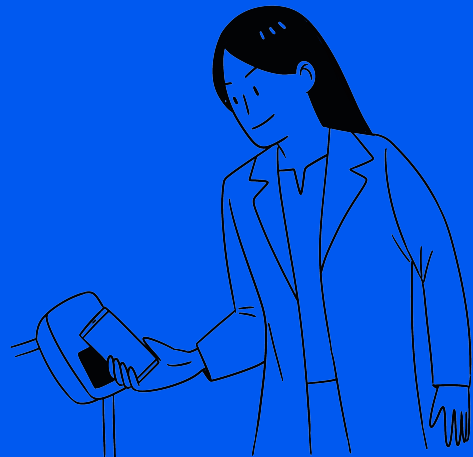
especially by using a transportation card instead of cash! You can buy a transportation card at any convenience store or online via the T-Money store. You can also buy a single-use transportation card that can be used only on the subway, available for purchase using kiosks in subway stations. Single-use cards require a KRW 500 deposit along with the fare, and you can get your deposit back by returning the card at a dedicated kiosk when you get off.

Transportation cards are also great because you can enjoy transfer discounts by tapping the card on the terminal when you get on and off during each transfer. Keep in mind that transfer discounts are applicable only for transfers under 30 minutes and a single continuous trip allows up to 4 transfers in one day.

You can enjoy life in Seoul more conveniently and economically if you use the transfer system with your transportation card when you take public transportation in Seoul.

 p.68 Annex : Transportation Cards

Getting around via public transportation



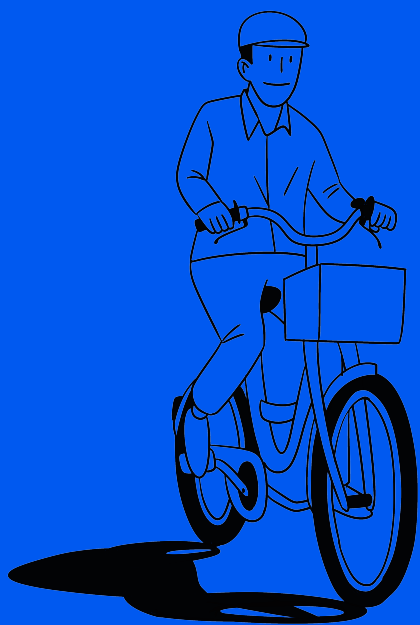
There is another mode of transportation for getting around Seoul—Ttareungi public bike share!

The name “Ttareungi” is a Korean onomatopoeia of a bike bell sound, named so to attract users as a mode of transportation that is convenient to use—whenever, wherever. To rent one, download the Ttareungi app or visit the official website of Seoul.

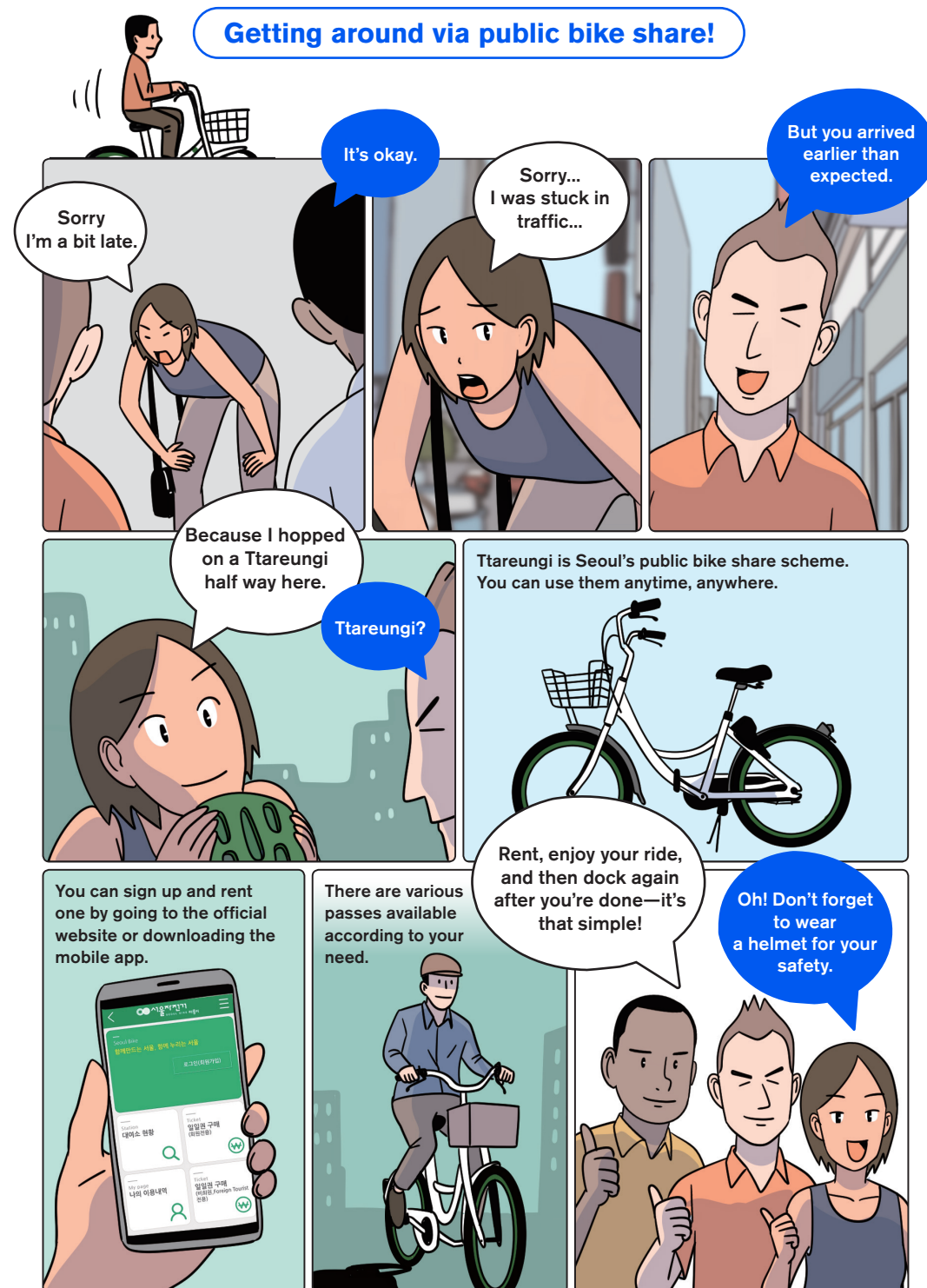
Sign up for membership, then follow the process of purchasing a pass. After buying the pass, look up a nearby rental station, and select the bike you want to rent, then enter the rental code on the terminal to undock a bike. To return, find a nearby rental station and dock your bike.

Ttareungi is highly recommended if you want to have a fun experience exploring every nook and cranny of the city using a healthy and eco-friendly mode of transportation.

 p.69 Annex : Ttareungi Public Bike Share



Getting around via public bike share!





When you live in another country, one of the most difficult things is learning a new language to communicate.

Seoul offers opportunities to learn the Korean language to foreigners living in Seoul who have difficulties with the language barrier. It provides various education programs where you can learn not only the Korean language, but also the Korean culture.

Many support organizations for foreigners, including the Seoul Global Center, and various private organizations offers free Korean classes, and they are also available online, which means they are highly accessible without restrictions of space and time. Various online Korean courses are offered via Seoul Foreigner Portal, Online King Sejong Institute, and EBS Durian websites.

Language acquisition requires not just speaking, but also becoming accustomed to the national culture. Learn the Korean language if you want to gain a deeper understanding and richer experience of the Korean culture.

Course information

Seoul Foreigner Portal



Online King Sejong Institute



EBS Durian



Learning the Korean language is easy!

Learning the Korean language is easy!



• The term "daebak" is often used as an exclamation, meaning awesome, cool, or amazing in Korea.

Korea is a renowned global IT powerhouse. Seoul's municipal broadband makes it a city of free data where everyone can use free public WiFi.

You may think it might be slow as it is free, but Seoul's free Kkachi On public WiFi service is four times faster than before. It was introduced to address the inconvenience of using conventional free data. It also lets you use public WiFi even on moving buses.

Through its efforts, Seoul has made it possible for everyone to enjoy free Internet in any public space across the city. To use Seoul's public WiFi, you only need to turn on the WiFi function of your mobile device and connect to the "SEOUL" WiFi network. Once set, you will be automatically connected to the Internet—whether you are at a park, at a traditional market, on the street, or on the bus.

Seoul's IT infrastructure is one of the world's best. Not only public WiFi, but also free mobile charging stations are installed across major spots, including subway stations, and there are various apps for you to get real-time facility information for convenient use.

Like this, Seoul is leading as a smart city that lets you enjoy convenience in daily life.



Freedom to connect —anytime, anywhere!



Industry 4.0 has accelerated the smartification of various fields in convergence with AI technologies. Mobility is no exception as autonomous driving has become the focus of global attention.

In line with this, Seoul is operating a robobus along the Cheonggyecheon Stream, one of the most visited tourist spots in Seoul. This robobus is not a typical mass produced autonomous vehicle that is simply equipped with radars and cameras. It is specialized in autonomous driving based on future-oriented design and technologies aimed at autonomous public transportation from the beginning.

The robobus is equipped with a glass panorama roof and wide windows as well as furnished with USB charging ports across all seats with a wide monitor for passengers' convenience. To prevent accidents during the unmanned operation, it is applied with a cutting-edge safety system, including door sensors to detect pressure and light detectors to minimize the risk of passengers getting stuck when getting on and off. During the pilot operation, safety agents will also ride the robobus together with passengers.

To use the free robobus service, download the TAP! app on your mobile device. Enjoy the landscape of Seoul while running along the Cheonggyecheon Stream on board the smart robobus.

Citywide smart mobility bus service!





Environmental problems have become a global issue and serious climate change has now a great influence on our daily lives. Thus, Seoul is conducting wise policies to solve climate change and environment problems.

Among them, Seoul is conducting the Oasis Project, akin to digging an oasis in the middle of the city. As one of its representative eco-friendly policies, participating cafes and restaurants provide visitors who bring a tumbler with free drinking water.

Seoul is actively implementing other various eco-friendly policies as well.

It is subsidizing purchases of electric vehicles and expanding charging stations to increase their distribution. It is also conducting a zero-waste campaign to encourage the use of reusable cups and recycling using cup collectors.

Seoul is pioneering as a clean city that responds to climate change by implementing active environmental policies and encouraging local communities through campaigns to improve the public's environmental awareness.

Oasis locations



Participate in eco-friendly campaigns!



As one of the safest cities in the world, Seoul has received good evaluation across fields from digital security and public health to infrastructure safety and personal protection. Among its various services, Seoul provides the Ansimi app service to protect users at night.

Ansimi has several functions required for safety, including return home monitoring, safe return home scout, safety parcel service, and more. Users can share their location via KakaoTalk, Facebook, and blogs to alert family and friends.

On Ansimi, you can use the safety services, such as safe return home taxi, emergency alarm, and illegal filming detection, as well as detector rental. If you take a safe return home taxi, the time you get on and off the taxi and the taxi information are automatically sent to the integrated surveillance center across 25 districts without your having to enter any information yourself. This way, your return home is monitored and your safety is relayed to the designated guardian.

Ansimi is easy to use. Just turn it on and touch the screen or shake the mobile phone for an automatic report to a district surveillance center and police dispatch. The app is available in three languages—English, Chinese, and Japanese. You can use all the services it offers and benefit from prompt response through three-party phone call with an interpreter.

Ansimi will be your reliable protector when you walk outside at night.

How to Use Ansimi

English



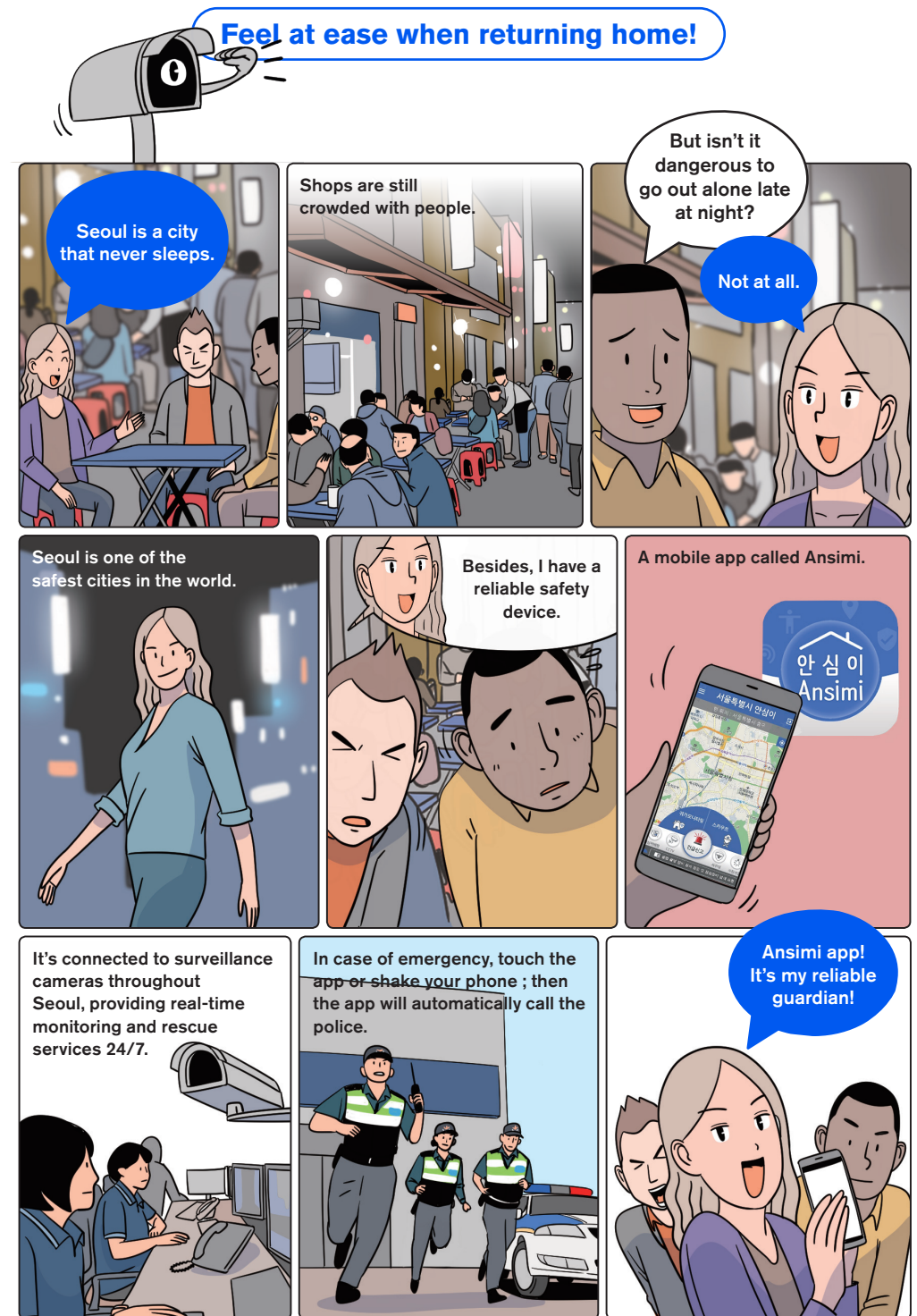
Chinese



Japanese



Feel at ease when returning home!



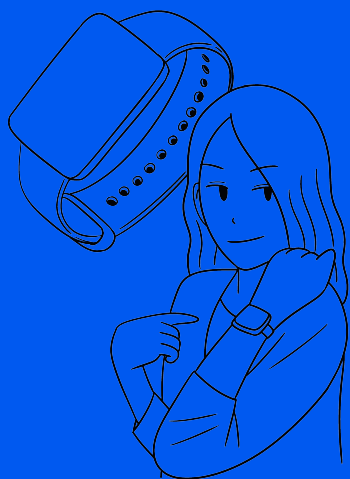
It's not easy to keep healthy while maintaining a busy life.

Seoul conducts diverse health-related city projects to help citizens live a healthy life. Among them, Seoul's Wrist Doctor 9988 smart healthcare program cares for citizens' health based on ICT technology.

Wrist Doctor 9988 monitors the user's health using a smart watch. Citizens can rent a smart watch for free, and the watch is connected via mobile app to provide the designated health-care manager with health information to monitor the user's health, such as activity, sleep, diet, and pulse, for a custom health consultation service.

On the mobile app, the pedometer counts the number of your steps and compares it with others'. The AI analyzes your diet when you take a photo of your diet and lets you know of the calorie intake. By participating in health missions, you can get points that you can use for paid goods and services. Wrist Doctor 9988 is a smart healthcare service that combines fun and technology.

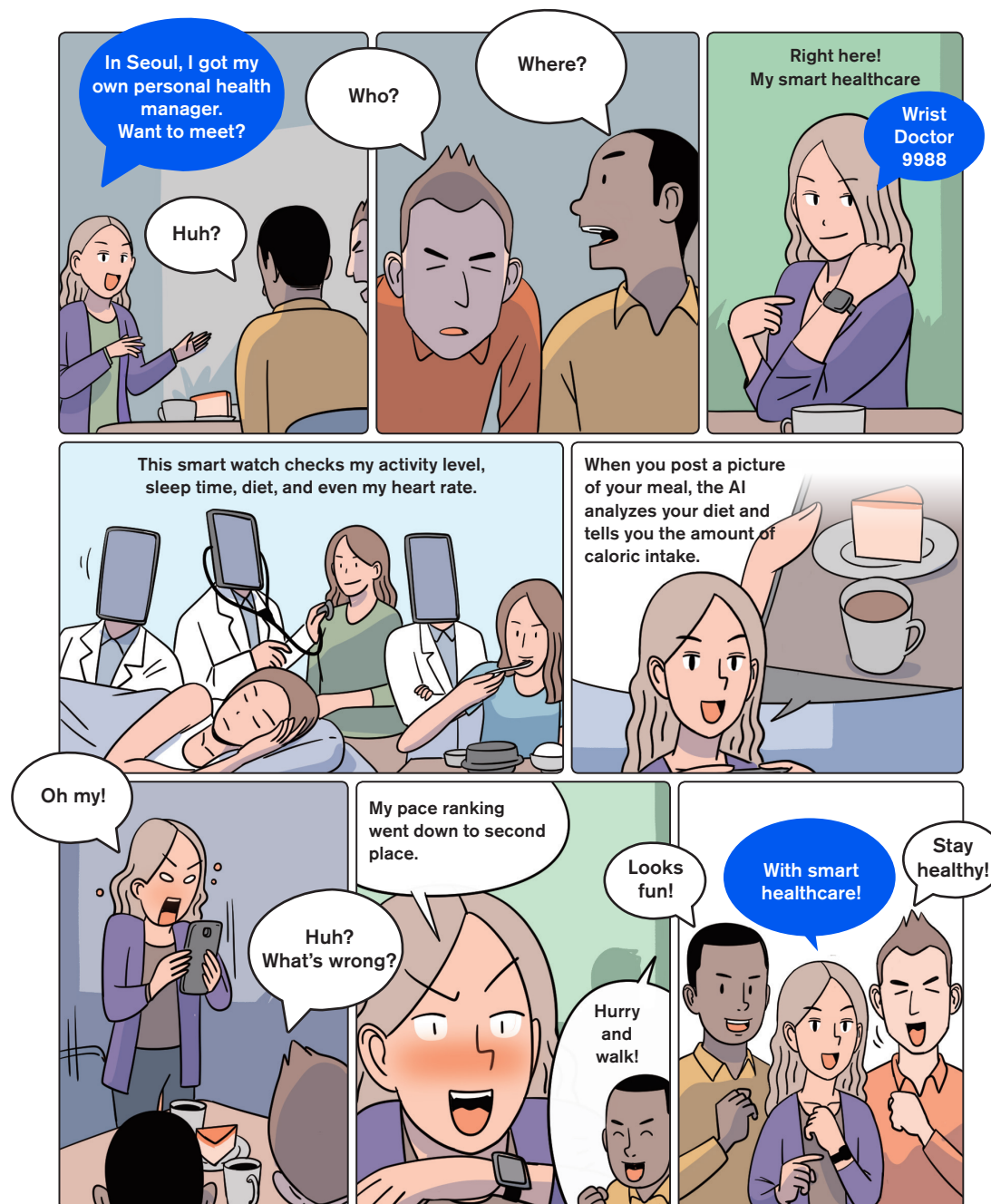
Seoul is becoming a city of happiness that take cares of its citizens' health. Participate in Seoul's smart healthcare project and enjoy your active life in Seoul.



Stay healthy with smart healthcare!

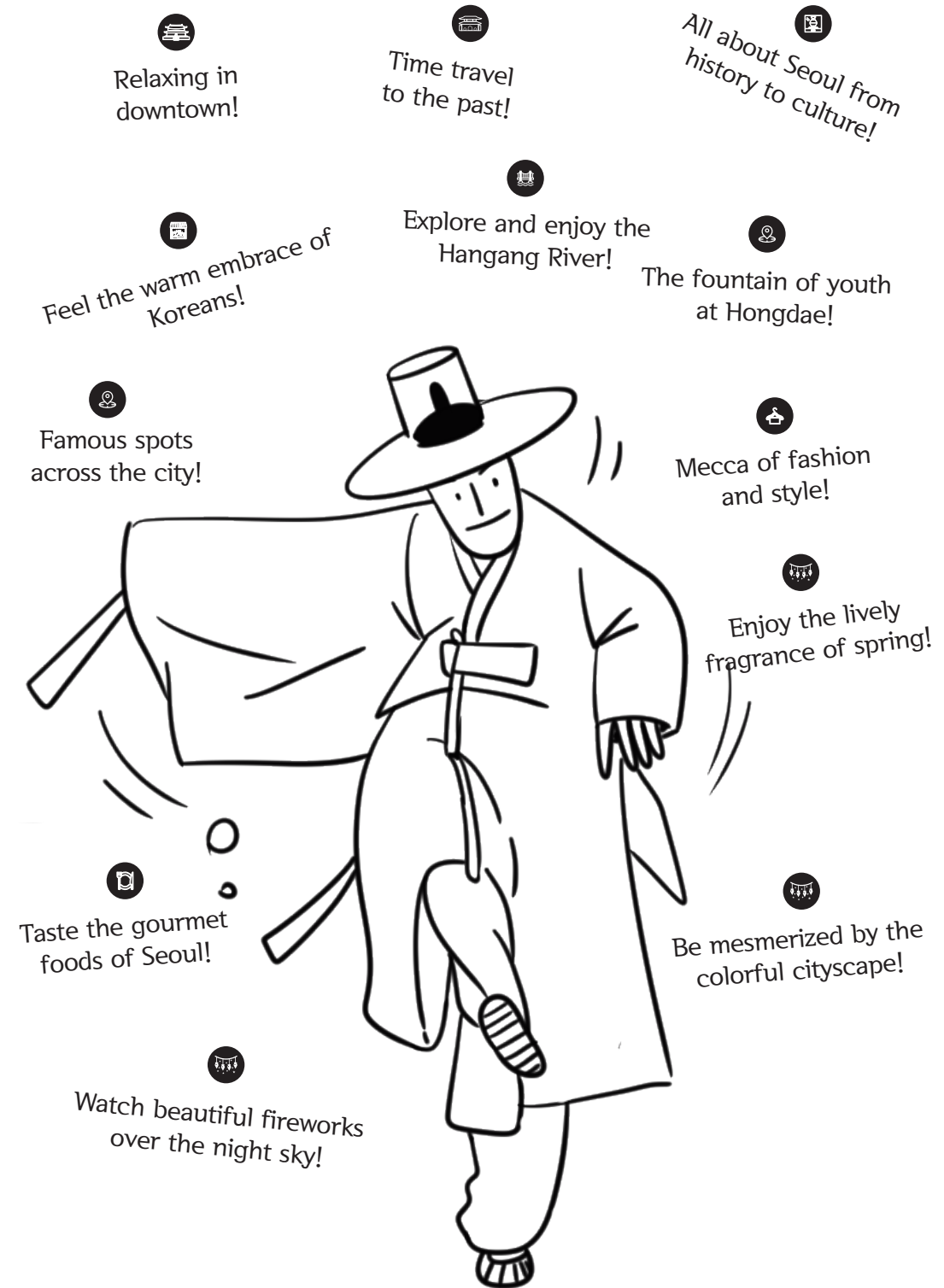


Stay healthy with smart healthcare!



Enjoying attractions in Seoul

2

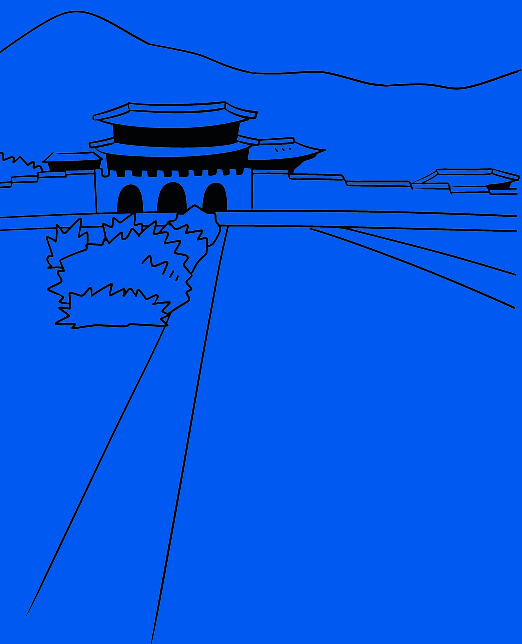


City squares serve to amplify and enhance the urban significance. City squares around the world embrace their respective city's history and culture.

Seoul has such a city square as well. It is called Gwanghwamun Square. As the center of the history and culture of the Republic of Korea, it is a significant place where people from the Joseon Dynasty to the present have gathered, sharing news and opinions.

The present-day form of Gwanghwamun Square gained its shape as a true city square in 2009. Then in August 2022, it was expanded three times as larger than the previous size with 5,000 trees that form the urban green space. It was reborn into a place of unwinding in the downtown with benches where people can freely rest as well as water facilities. Alongside, there are various sculptures that combine historic and cultural records, such as the statues of King Sejong and Admiral Yi Sun-sin, that add to the greater symbolism of the square.

On the left, there is the Sejong Center that displays a large-sized media art, adding spatial and symbolic values to Gwanghwamun Square as the center and symbol of Seoul. Receiving wholehearted love from Seoul citizens, Gwanghwamun Square is a public space for daily relaxation as well as a special venue for festivals and events at the same time.



Relaxing in downtown!

Relaxing in downtown!



Seoul is a city where tradition and modernity coexist in harmony. Traditional spaces, such as royal palaces and hanoks, that preserve hundreds of years of history in the modernized city make Seoul more attractive.

The four major palaces of Seoul (i.e. Gyeongbokgung Palace, Changdeokgung Palace, Changgyeonggung Palace, and Deoksugung Palace) contain the architecture and royal culture of the Joseon Dynasty. The royal rooms of grandeur, fancy dancheong (traditional decorative coloring on wooden building roofs), the curves of eaves, and the lovely wall presents difference compared to the busy downtown with skyscrapers.

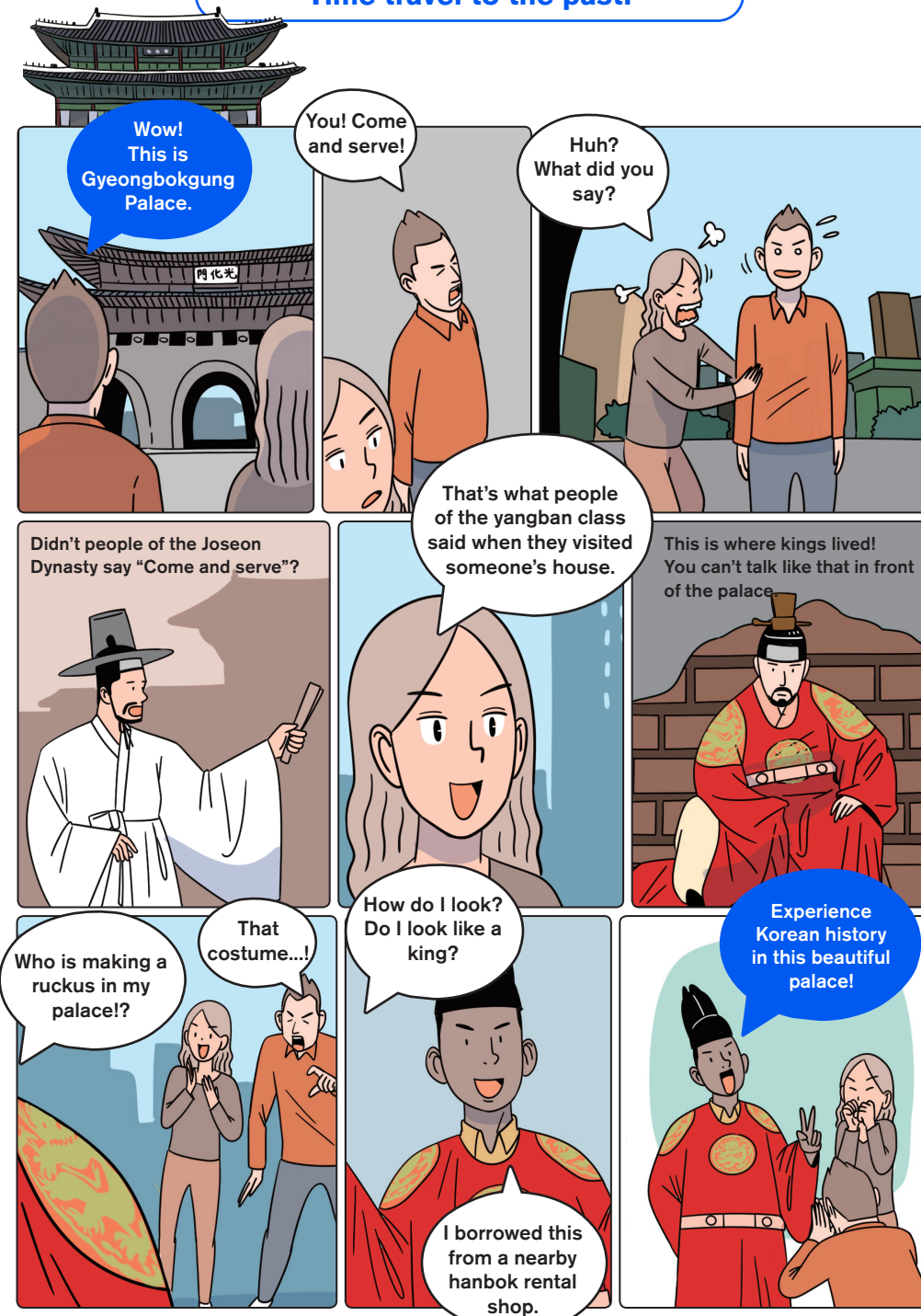
Anyone wearing a hanbok can enter for free, and you can find hanok rental shops easily near the palaces. The palaces also operate various events and programs where you can have vivid and meaningful experiences. They open at night during certain periods for visitors to enjoy the Korean traditional nightscape in beautiful atmosphere compared to the general urban nightscape. The last Wednesday of every month is designated as Culture Day, and you can enter any palace, national museum, and art museum for free on this day.

Time travel to the past in downtown and you will enjoy another charm of Seoul to the fullest.

 **p.71 Annex : Palaces**

Time travel to the past!

Time travel to the past!



There are many museums in Seoul that keep the historic and cultural relics of Korea.

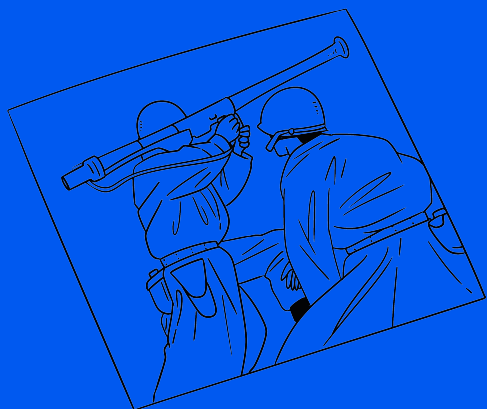
You can visit a variety of museums, including the National Folk Museum of Korea where you can look into Korean customs and the traditional lives of Koreans, the War Memorial of Korea where you can learn everything about the Korean War, the National Museum of Korean Contemporary History where you can browse the modern and contemporary history of Korea, the Seoul Museum of History where you can take a glimpse of Seoul's history and culture, and the Seoul Museum of Craft Art where you can take a look at craft artworks with detailed information and records about them. These museums holds various exhibitions and provides diverse programs, enabling you to feel and experience the historic and cultural values of Korea and Seoul vividly.

The Seoul Museum of Art, which has local branches throughout the city, is transforming the entire city of Seoul into an art museum by installing various artworks citywide. Seoul is expanding the public's access to art to transform the city into a museum of the arts and culture. An example of its efforts is the Underground Art Garden in Noksapyeong Station.

Tourists are encouraged to visit any one of these museums to not only explore the history and culture of Seoul, but also experience the aesthetics and charms of Seoul.

🔗 p.72 Annex : Museums

All about Seoul from history to culture!



All about Seoul from history to culture!



Seoul is made all the more attractive through a combination of natural and urban experiences. The Hangang River, which runs across the city, has cultural spaces and restaurants along it that provide unique experiences.

Along the river, there are a total of 11 Hangang Park locations. There you can enjoy various performances, festivals, and water sports—the cruise ship is an added bonus for those feeling adventurous to appreciate both the beautiful landscape and cityspace of Seoul. Hangang Park is a good place to have a leisurely time riding a bicycle feeling the cool riverside breeze. There are convenience stores every few hundred meters where you can stop by for a quick snack—from instant ramyeon to dosirak—a must-try experience on the Hangang River.

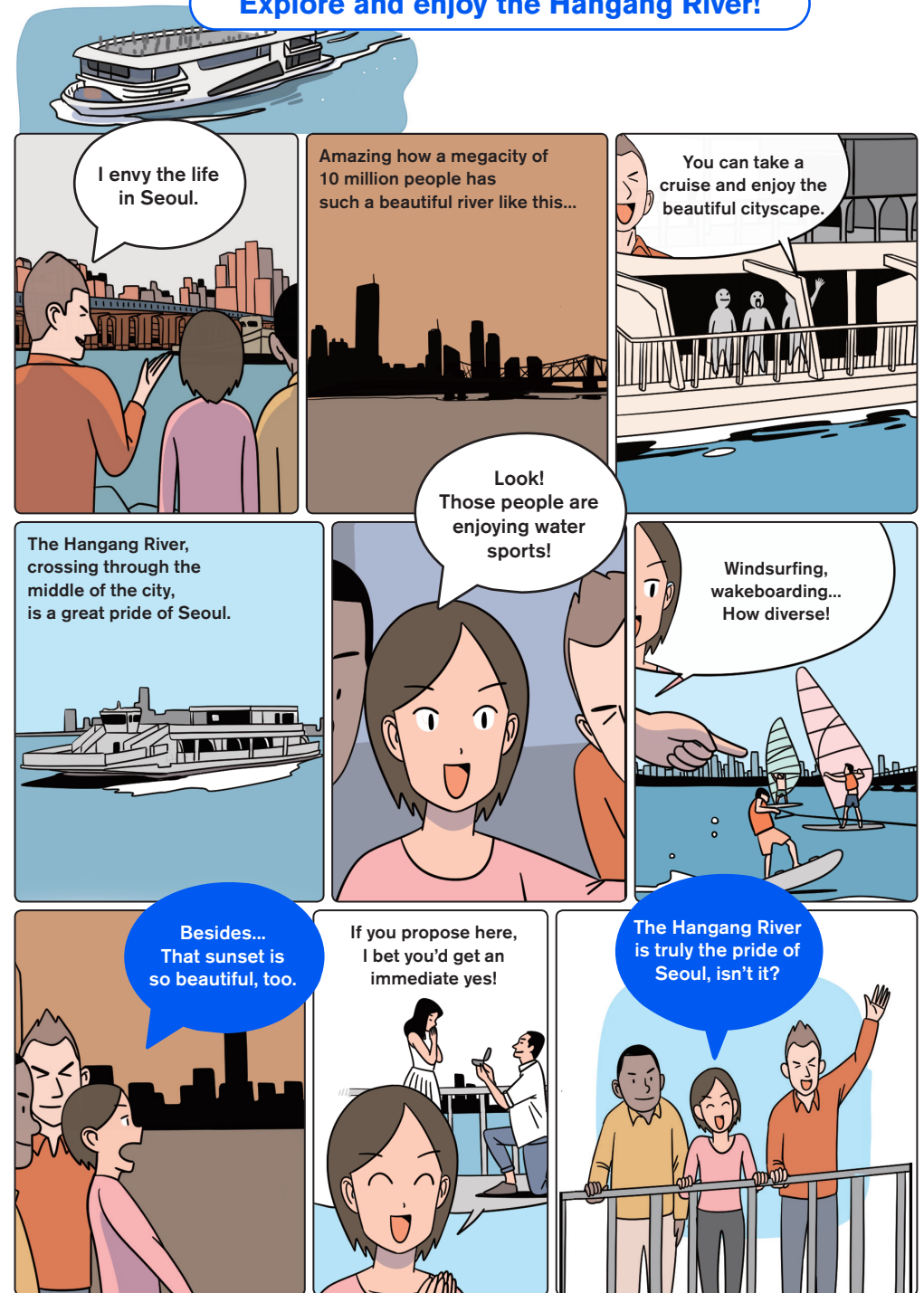
The Hangang River is also a venue for festivals and events all year round. You can try various eats from food trucks at Hangang Moonlight Market, which is held in September and October. Also during fall, the annual Seoul Fireworks Festival covers the night sky with fancy fireworks.

Seoul has plans to develop and promote attractive sunset spots to gain global attention, such as by building the world's largest ferris wheel and a floating stage. Visit the parks alongside the Hangang River to enjoy a rich experience of colorful lights and delightful people in serene riverside nature.



Explore and enjoy the Hangang River!

Explore and enjoy the Hangang River!





Seoul, as the capital of the Republic of Korea, is a cluster of various industries and cultures. While a modern city may be seen as complete with residential areas and commercial shopping centers, Seoul has traditional markets that boast the long history of the city.

Unlike supermarkets and malls, traditional markets in Seoul exude warmth with friendly merchants. These markets have various stalls that not only sell products, but also exhibit original cultures that makes them thrive.

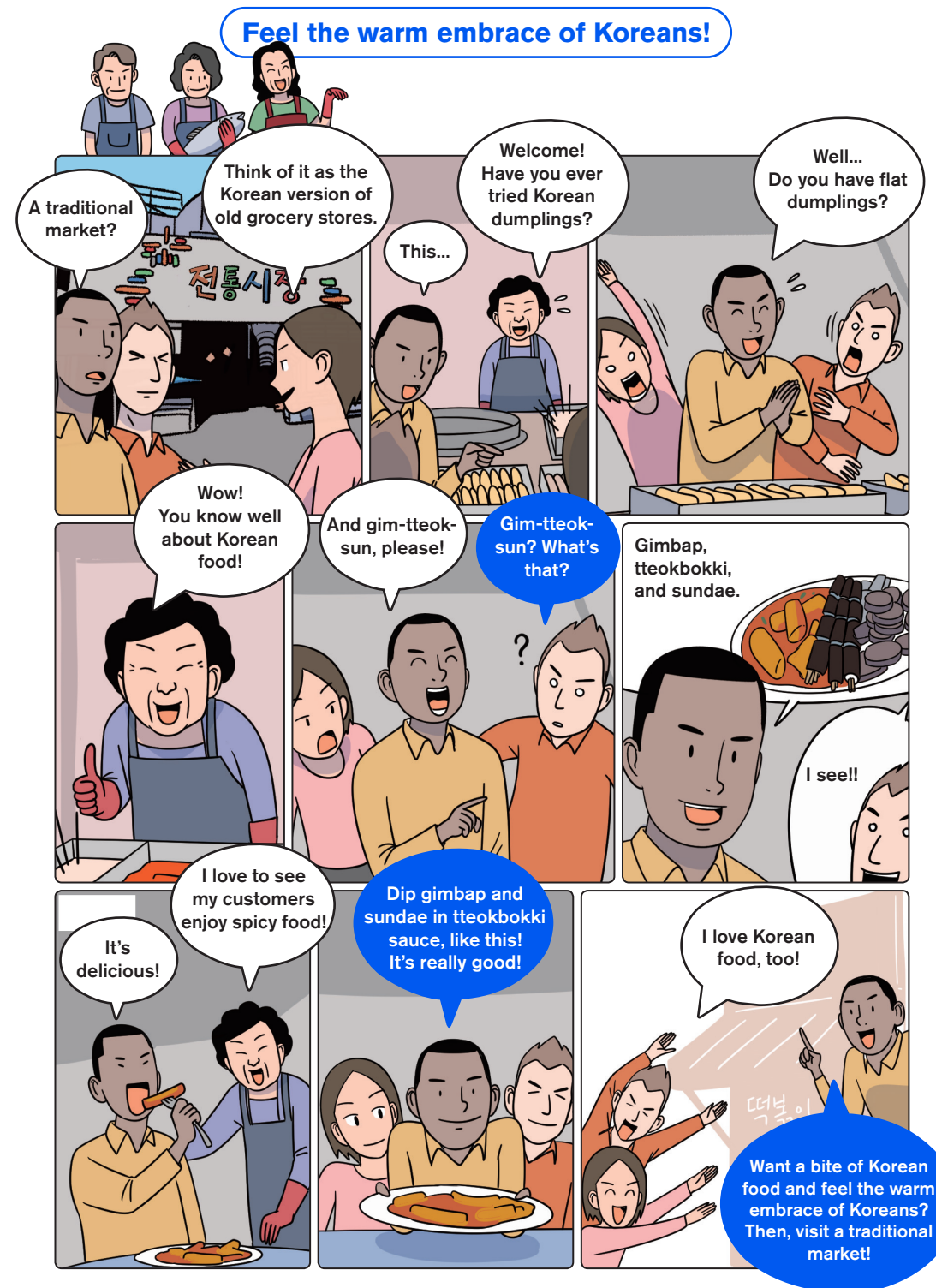
Some of representative traditional markets in Seoul are Namdaemun Market, Tongin Market, Mangwon Market, Gwangjang Market, and Gyeongdong Market. They all have their own original and unique eats to offer. When you visit one of them, you can taste traditional foods that have been loved by Koreans for a long time, such as mung bean pancakes, spicy rice cakes, noodles, and twisted bread sticks.

The traditional markets in Seoul are always crowded with customers, local and international alike. This is not only because they sell tasty foods and unique goods, but also, more importantly because the merchants welcome patrons with warm greetings.

∞ p.74 Annex : Traditional Markets



Feel the warm embrace of Koreans!



Seoul is a city brimming with individuals' originality and vitality. There are unique streets filled with young people on weekends. Some of them include Hongdae, Gangnam, Euljiro, Seongsu, and Itaewon.

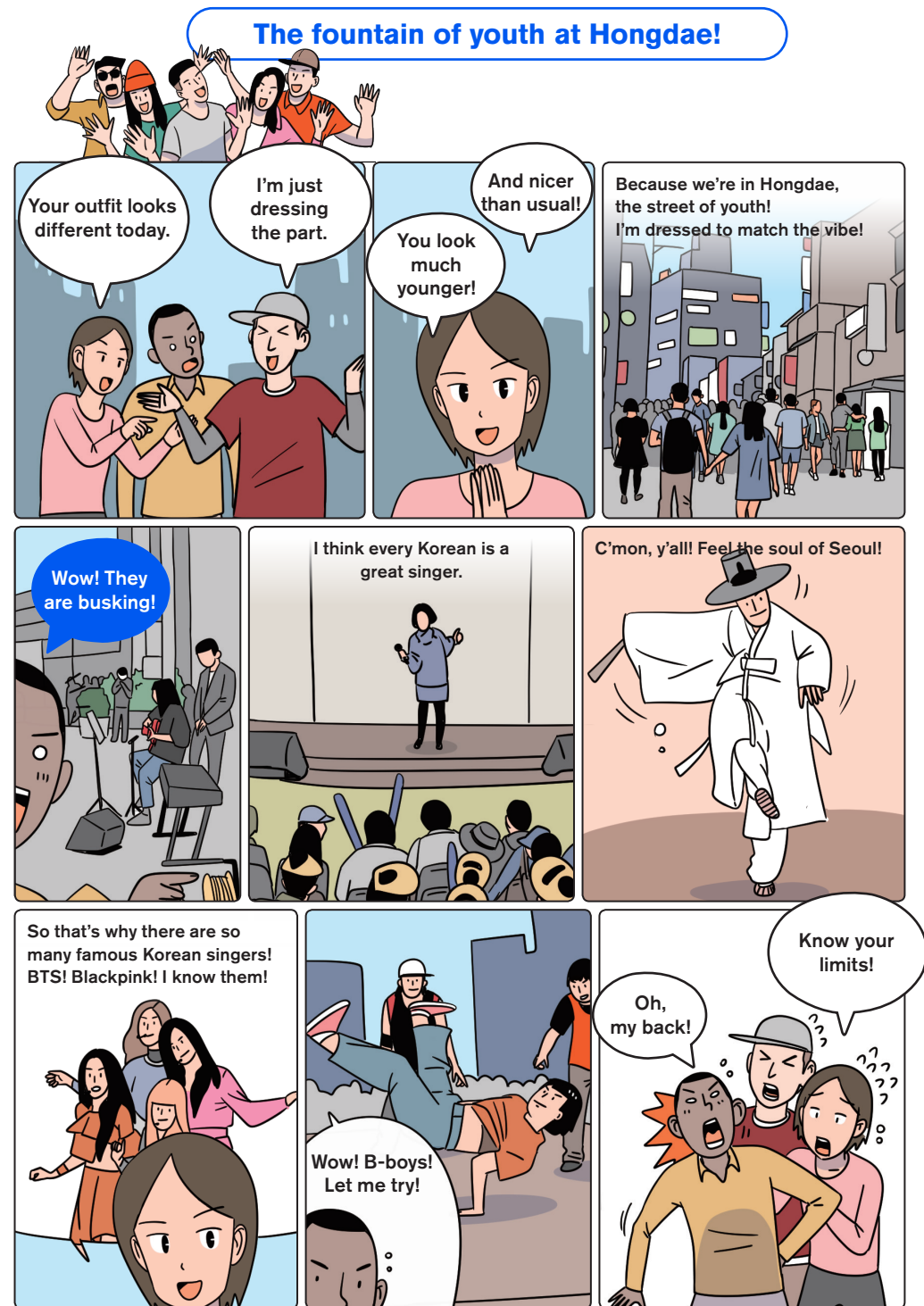
Hongdae, in particular, is one of the most representative trendy places frequented by young people. Hongdae is a symbolic street of youth in Seoul as it is located in a commercial district near a university campus. Nearby neighborhoods include Yeonnam-dong and Sangsu-dong, making Hongdae more diversified in youth culture.

Known as the mecca of busking, Hongdae is also popular for its dance and singing buskers, a stage for many different young idiomatic artists.

Such youthful streets in Seoul are becoming more and more famous as they gain recognition as trendy places by going viral on social media platforms, inviting a greater number of visitors.



The fountain of youth at Hongdae!



Seoul has a great number of trendy places other than Hongdae imbued with unique cultures and serving delectable eats.

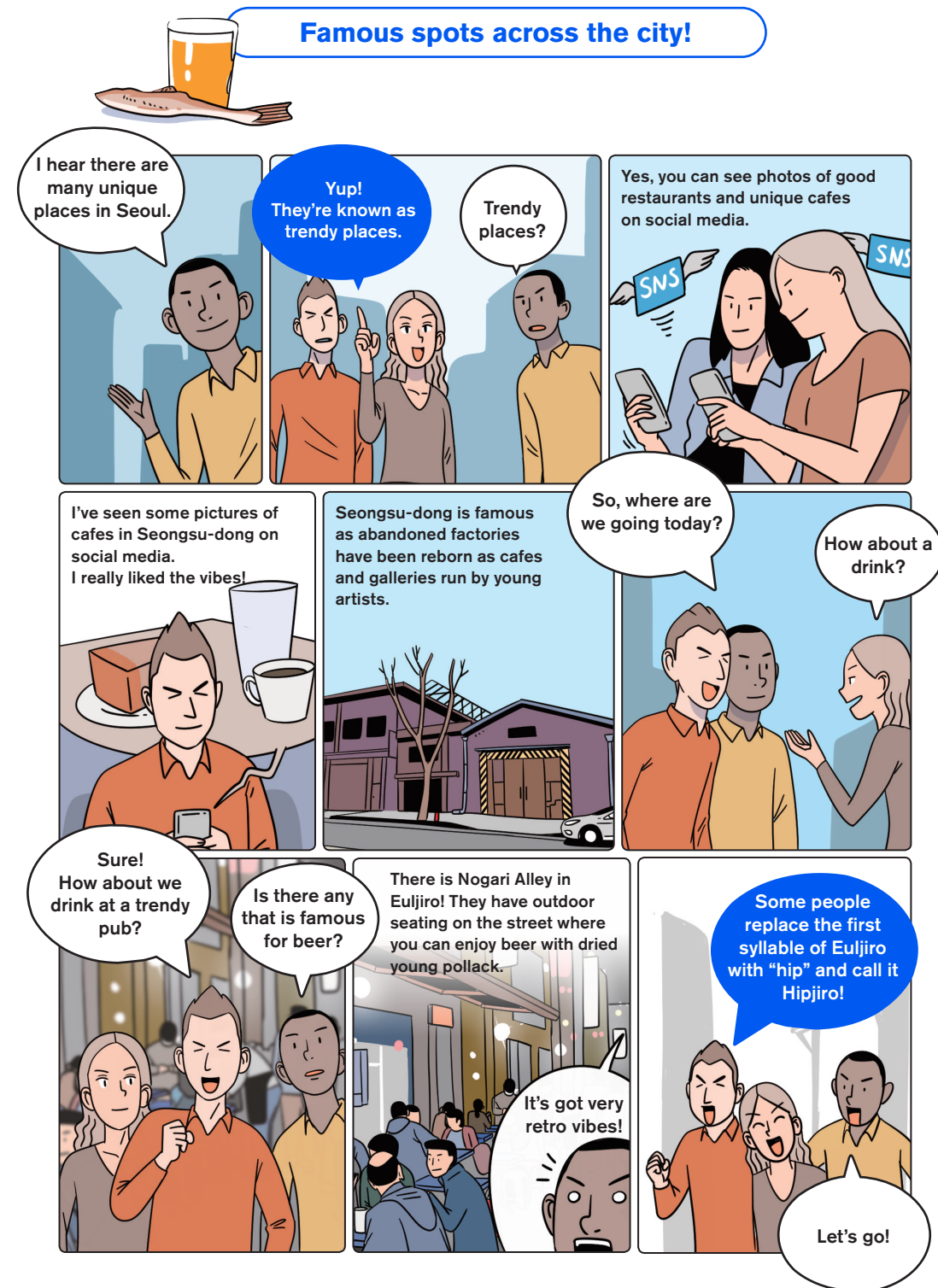
For one, Seongsu-dong is famous for hand-made shoemakers, but gained its current popularity after abandoned light manufacturing plants turned into trendy cafes and galleries by young artists. There are other unique trendy places in Seoul as well, such as the linear rail trail greenway of Gyeongui Line Forest Park, hanok architecture in Ikseon-dong, bistros and boutiques along Garosu-gil Street of Sinsa-dong, and the 3D media facade of COEX.

There is also an alley famous for its hole in the wall restaurants with outdoor seating that allures office workers on their way home. It is called Nogari Alley in Eulji-ro. In the 1970s during Korea's great economic development, the alley was visited by white-collar workers of nearby offices and laborers of nearby printing houses and hardware stores after work for a glass of beer and nogari (dried young pollack). These restaurants are still open for business and Eulji-ro is visited by both workers and youngsters alike every night to enjoy nostalgic and retro vibes.

If you want to experience young Seoul overflowing with sensitivity and uniqueness, visit one of the city's trendy places with exuberant charms.



Famous spots across the city!



Korea's beauty industry has recently been getting global attention—to the point that it has been branded as “K-beauty.”

K-beauty encompasses the entire domestic beauty industry with cosmetics at the head and covering even fashion and medical sectors. It is expanding its sphere rapidly online as well. Differentiated K-beauty products and content based on the unique Korean style have earned great notice and trust from global consumers. Next to France and the United States, Korea is now the third largest cosmetics exporter.

Recently, as Korean culture has gained global recognition through media content, including *Parasite* and *Squid Game* as well as BTS and Black Pink, Korean beauty items and styles are having greater influence.

As the hub of K-beauty where four among the world top 100 beauty and fashion brands are located, Seoul has a various types of infrastructure for beauty industry and clusters of K-beauty trends, such as Dongdaemun, Myeongdong, Hongdae, and Gangnam.

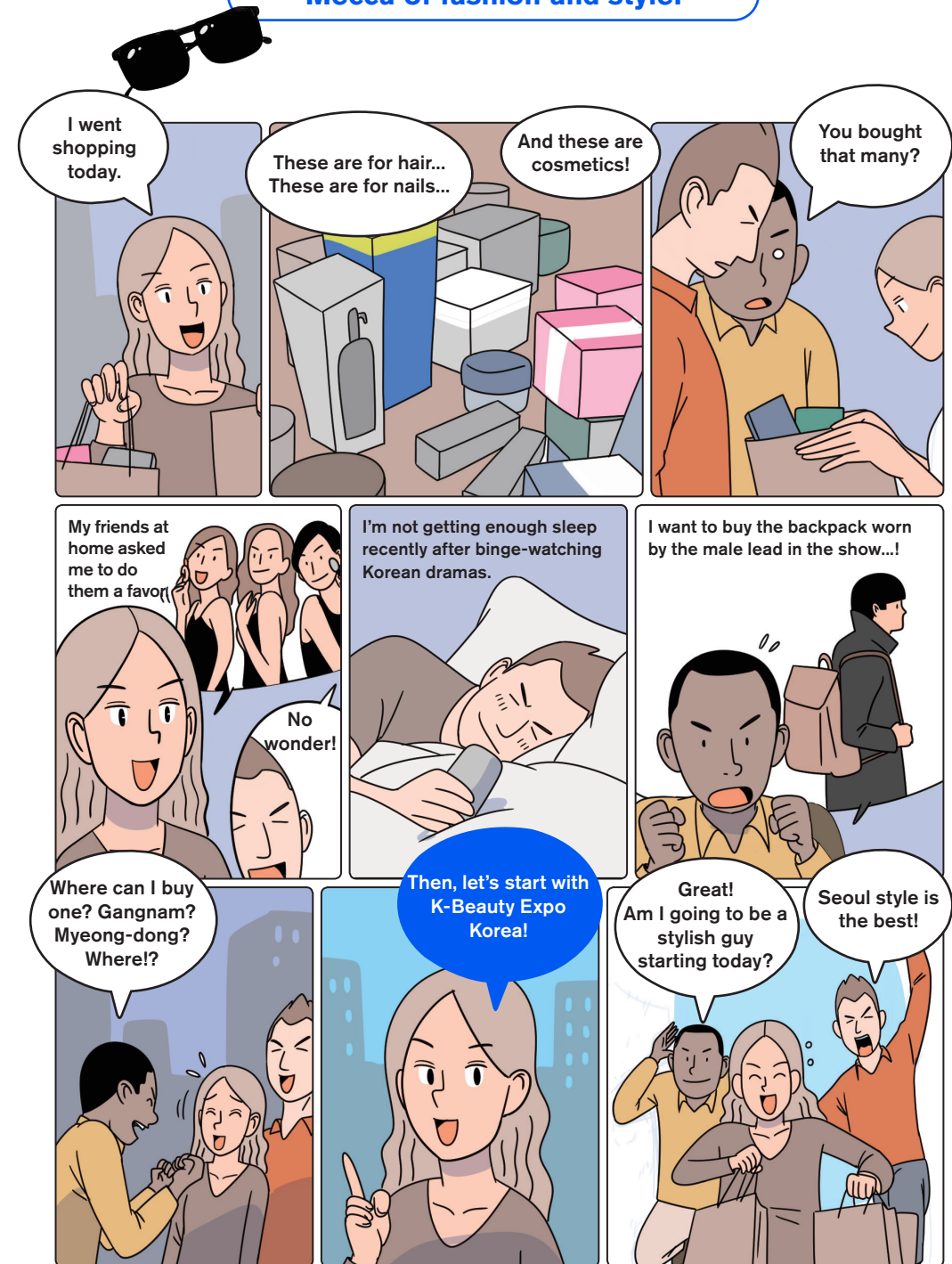
Seoul is making efforts to promote K-beauty internationally by hosting various events, such as Seoul Fashion Week, Seoul Beauty Travel Week, and Seoul Beauty Month, that encompass beauty, fashion, culture, and tourism. How about playing the role of a fashionable protagonist of a Korean drama in the stylish city of Seoul?

Seoul Beauty Month



Mecca of fashion and style!

Mecca of fashion and style!





Korean food has risen as one of the most trending foods in the world through various media. CNN recently reported, "Korea's coolest export? Not K-pop, but makgeolli."

Korean food is widely known like this because the commercial value of Korean food has increased with the spread of the consumption of online cultural content, such as K-pop and mukbang (eating streams), and following the global success of Parasite as well. If foreigners only talked about kimchi and bibimbap as Korean foods before, now they talk about various Korean food menus from tteokbokki and mandu to ramyeon and chimaek. In particular, when asked about their favorite food, international tourists who visited Korea answered "samgyeopsal" (grilled pork belly).

As a city that offers a great variety of delectable Korean food, Seoul is the center of gourmet eats with the best ingredients and experienced chefs.

Taste of Seoul, a food festival to promote the culinary culture of Seoul, provides visitors with opportunities to experience delicious dishes from around the world, including Korean food, and shares related gourmet information by selecting special tastes that are unique to Seoul.

Visit the website below if you want to enjoy a more exciting life with the taste of Seoul.

[Taste of Seoul](#)



Taste the gourmet foods of Seoul!



In spring, Seoul becomes a more beautiful city with cherry blossoms. In April in particular, Hangang Park in Yeouido is covered in flowering cherry blossoms. This marks the time of the week-long Hangang Yeouido Spring Flower Festival, the largest flower festival in Seoul.

This festival has been held under the name of Hangang Yeouido Spring Flower Festival, and it is filled with 13 kinds of 87,859 flower trees, including azalea, forsythia, royal azalea, and bridal wreath spirea, as well as flowering cherry that is native to Jeju Island. The festival sends the signal of the coming of full spring, and scenic spring flowers form a splendid landscape as they boast their elegance and fragrance against the background of the Hangang River.

During the festival, the car access is restricted so you can safely and leisurely enjoy the stroll along the cherry blossom street feeling the flower-packed spring.

If you want to relish the spring in Seoul, why not take a picture of a beautiful moment of scattering cherry blossoms in Hangang Yeouido Spring Flower Festival in the harmony of flower and people?

☞ p.75 Annex : Festivals

Enjoy the lively fragrance of spring!

Enjoy the lively fragrance of spring!



You can call Seoul the city of festivals. It has numerous festivals that take place all year round. One of the most representative festival in Seoul is the Seoul International Fireworks Festival.

Held over Yeouido Hangang Park and the banks of the Hangang River every autumn, the festival was initiated to give joy and hope in hearts of Seoul citizens. After its launch in 2000, the festival has invited the world class firework companies every year, showing a fantastic fireworks on the stage of the night sky of Yeouido. The multimedia firework is the main highlight of the festival. As the most spectacular fireworks event in Asia, it combines fireworks with music and lasers, and more than one million citizens visit to watch the show.

The festival attracts a great number of viewers that gather not only in Yeouido Hangang Park, but also parks across the Hangang River and on the bridges over Yeouido, such as the Mapodaegyo Bridge and the Wonhyodaegyo Bridge.

Don't miss the spectacular fireworks in the night sky that complete the beautiful cityscape of Seoul along the Hangang River. The beautiful night sky with magnificent fireworks will be a huge refresher and fill you with excitement.

∞ p.75 Annex : Festivals

Watch beautiful fireworks over the night sky!

Watch beautiful fireworks over the night sky!



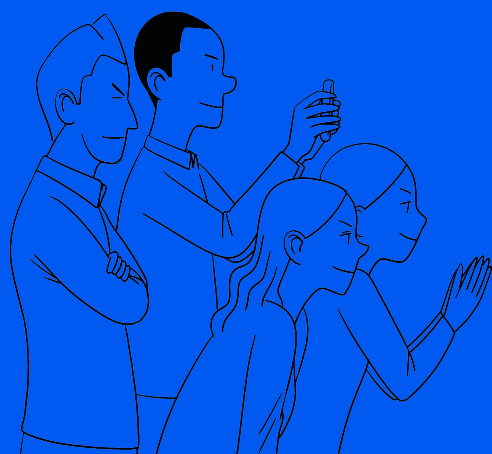
Around the end of the year, the Seoul Lantern Festival is held to fill the downtown with various light installations. It is one of the most representative night festivals in Seoul that shines the city with cheering lights of hope.

First launched to celebrate "Visit Korea Year" in 2009, it attracted the most number of people in 2014 at 3.14 million visitors. As of the following years, the festival began to encompass all types of lights, such as traditional lamps and modern LEDs.

The Seoul Lantern Festival has become a representative winter festival in Seoul as it has taken place for 13 years under a certain theme along the Cheonggyecheon Stream every year. The festival has lightened up the night of Seoul and been enthusiastically loved by Seoul citizens. In 2022, the festival was moved from the Cheonggyecheon Stream to Gwanghwamun Square, lighting up downtown with beautiful lights on the occasion of Gwanghwamun Square's renovated reopening.

With the year coming to an end, wouldn't it be nice to look forward to a brighter tomorrow at this light-filled festival?

☞ p.75 Annex : Festivals



Be mesmerized by the colorful cityscape!



Be mesmerized by the colorful cityscape!





Annex



Global Center Contact List

Immigration Contact Center

Transportation Cards

Ttareungi Public Bike Share

Information: Parks

Information: Palaces

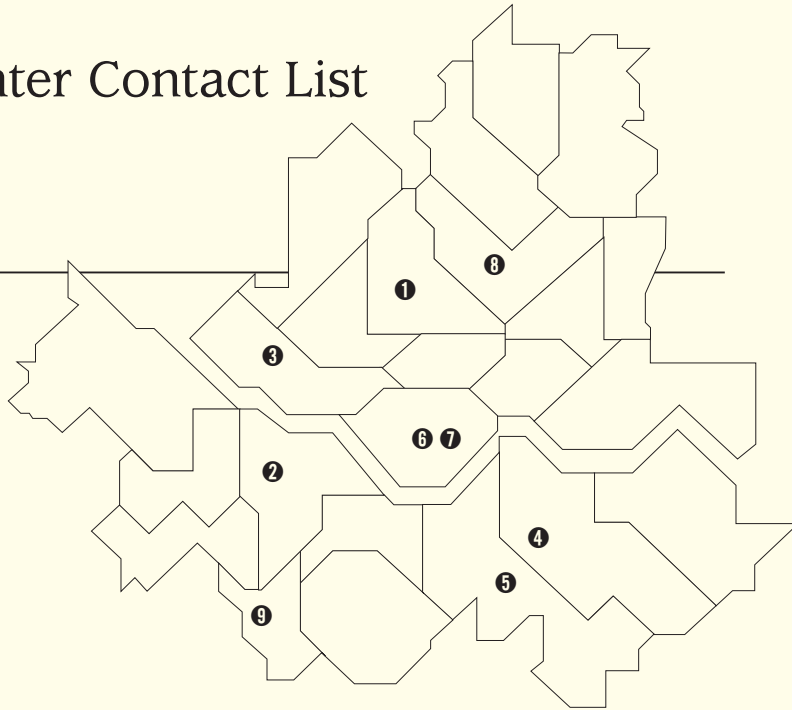
Information: Museums

Information: Traditional Markets

Information: Festivals

Global Center Contact List

Foreign Resident
Support Centers



❶ Seoul Global Center

📍 38 Jong-ro, Jongno-gu
🏠 <http://global.seoul.go.kr>
☎ +82-2-2075-4180

❷ Seonam Global Center

📍 40 Dosin-ro, Yeongdeungpo-gu
🏠 www.swsgc.co.kr
☎ +82-2-2229-4900,
+82-2-2670-3800~3806

❸ Yeonnam Global Village Center

📍 3F, 219 Donggyo-ro, Mapo-gu
🏠 <http://global.seoul.go.kr>
☎ +82-2-6406-8151~8153

❹ Gangnam Global Village Center

📍 16 Yeoksam-ro 7-gil, Gangnam-gu
🏠 www.gangnamglobal.com
☎ +82-2-3423-7960~7962

❺ Seorae Global Village Center

🏠 <http://global.seoul.go.kr>
☎ 02-3423-7960~2

❻ Itaewon Global Village Center

📍 #504, 211 Itaewon-ro, Yongsan-gu
🏠 <http://global.seoul.go.kr>
☎ +82-2-2199-8883~8885

❼ Ichon Global Village Center

📍 #304, 224 Ichon-ro, Yongsan-gu
🏠 <http://global.seoul.go.kr>
☎ +82-2-796-2018

❽ Seongbuk Global Village Center

📍 134 Seongbuk-ro, Seongbuk-gu
🏠 <http://global.seoul.go.kr>
☎ +82-2-2241-6381~4

❾ Geumcheon Global Village Center

📍 116 Gasan-ro, Geumcheon-gu
🏠 <http://global.seoul.go.kr>
☎ +82-2-2627-2884 (2881~2887)

Immigration Contact Center

Immigration Contact Center

The Immigration Contact Center handles **general multilingual complaints and consultation services related to administration and daily life that foreigners need while living in Korea such as immigration, visas, nationality, employment, etc.**

❶ What is the Immigration Contact Center?

It is a general consultation service where foreigners can receive help while living in Korea such as immigration, visas, nationality, employment, etc.

❷ How do I use it?

Domestical calls

1345 (no area code)

International calls

+82-1345 / +82-2-6908-1345-6

FAX

+82-2-1577-1346 / +82-2-2650-4550

The Immigration Contact Center provides consultation and guide services in 20 languages* including Korean, English, and Chinese during the daytime (9 AM – 6 PM).

❸ What kind of help can I receive?

Anyone including employers, marriage immigrants, and foreigners can receive complaint and consultation services for all areas of immigration (e.g. nationality, investment, visas) and life in Korea.

• 20 languages

Korean, English, Chinese, Japanese, Russian, Vietnamese, Thai, Mongolian, Indonesian, French, Bengalese, Urdu, Nepalese, Khmer, Burmese, German, Spanish, Tagalog (Filipino), Arabic, and Sinhala.

Transportation Cards

Transportation Cards

Transportation cards are convenient to purchase and use for any mode of public transit. You can access subways, buses, taxis, and bicycles using your transportation card.

① How to Purchase

The types of transit cards include T-money and Cashbee, and you can use after reloading. Cards are sold in convenience stores (e.g. GS25, 7-Eleven, Cashbee, CU, Ministop, E-mart 24), subway stations (Line 1-9), T-money online shop, etc.

The prices of the card may differ, but it is around KRW 4,000 to 8,000. You can only use it with a balance of at least KRW 250.

② How to reload and use

Charging stations are located in subway stations and supports multiple languages. You can reload using cash, bank transfer, debit card, and credit card, etc. If you tap your card at the entrance, it will make a 'beep' sound and pay the fare. If more than 2 people are getting on with one card, tell the driver in advance and tap as instructed.

③ Single-use transit card

- You can use single-use cards that can be reused. You can purchase single-use cards from the automatic dispenser installed in subway stations.
- When purchasing single-use transit cards, you must pay a refundable deposit of KRW 500 along with the fare. You can receive your deposit by inserting your card at an automatic dispenser.
- Fare for single-use cards adds KRW 100 to the normal fare, and can only be used on subways

You can freely transfer using one transit card regardless of company and line, and it has the advantage of calculating fare at once.

Ttareungi Public Bike Share



Ttareungi is Seoul's public bike share service which anyone can use whenever with convenience. You need to be at least 15 years old to use, and persons under the age of 19 require a guardian's consent.

You can purchase a pass via the official website or mobile app after signing up. Non-members can use a day pass.

① How to rent and return

- Bikes can be returned to any nearby rental station.
- There are a total of 444 rental stations across multiple districts based on August 2017, and you can look up nearby rental stations via the official website or mobile app.

② Member registration

- Member registration is completed when you enter your 16-digit T-money card number via "My page" ⇨ "Register membership card" on the main screen.
- Post-payment transit cards or cards with RFID must use the smartphone app. Select the bike you wish to rent and select 'Register membership card'. If you press the home button on your device, it will say "Please tap the membership card you wish to register," which will complete the registration process when you tap your card onto the device.

③ How to use

- Purchase pass (Visit the official website via PC or mobile phone: <https://www.bikeseoul.com>)
- Select a bike and enter the rental no. (press button on device first)
- Rental - Separate device locking device
- Return - Return to any rental station

④ Fare

Non-members - Day pass (1 hour: KRW 1,000; 2 hours: KRW 2,000)
Members - Same price

⑤ Additional fare

1 hour pass:
KRW 200 every 5 minutes after 1 hour
2 hour pass:
KRW 200 every 5 minutes after 2 hours

- Additional fare is imposed beyond the base rental time. (Cannot rent again until the additional fare is paid fully.)
- Bikes are considered to be stolen or lost if it is not returned within 4 hours for 1 hour passes.

Information: Parks

There are many more parks with various themes across Seoul. Visit to learn more about Seoul's mountains and parks.



Hangang Park

Hangang Park is located across 11 districts centered around the Hangang River, including Gangseo, Yanghwa, Mangwon, Nanji, Yeouido, Ichon, Banpo, Jamwon, Ttukseom, Jamsil, and Gwangnaru.



World Cup Park

World Cup Park, located near Seoul World Cup Stadium, is the result of an urban regeneration project that transformed the 15-year-old landfill into a large ecological park to commemorate the 2002 Korea-Japan World Cup and the new millennial. It consists of 4 theme parks including Peace Park, Sky Park, Sunset Park, and Nanjicheon Park.



📍 84 Haneulgongwon-ro, Mapo-gu, Seoul
World Cup Stadium Station (Line 6)
☎ +82-2-300-5501

Olympic Park

Olympic Park, originally constructed to commemorate the 1986 Asian Games and 1988 Seoul Olympics, is currently loved as a general park that has many purposes such as sports, art, culture, history, and education.



📍 424 Olympic-ro, Songpa-gu, Seoul
Olympic Park Station (Line 5)
Mongchontoseong Station (Line 8)
Olympic Park Station & Hanseong Baekje Station (Line 9)
☎ +82-2-410-1114

Seonyudo Park

Seonyudo Park is an ecological and water park that was created by reusing structures from a filtration plant. You can see various aquatic plants and ecological forests from the water purification plant, Water Plants Garden, environment water playground, etc.

📍 343 Seonyu-ro, Yeongdeungpo-gu, Seoul
Seonyudo Station (Line 9)
☎ +82-2-2631-9368

Seoul Forest

Seoul Forest opened its doors in 2005 to transform the previous Ttukseom Sports Park area into an urban park like the New York Central Park. An outdoor stage, plaza, and artificial pond can be seen between the high rising trees.



📍 273 Ttukseom-ro, Seongdong-gu, Seoul
Seoul Forest Station (Bundang Line)
☎ +82-2-460-2905

Songpa Naru Park

Songpa Naru Park, also called Seokcheon Park, is a park created near Jamsil Seokchon Lake. It is popular for family outings and students because of nearby facilities such as amusement parks and department stores.

📍 136 Samhaksa-ro, Songpa-gu, Seoul
Jamsil Station (Line 2, 8)
Seokchon Station (Line 8)
☎ +82-2-2147-3380

Information: Palaces

There are 4 major Joseon-era palaces located in downtown Seoul: Gyeongbokgung Palace, Changdeokgung Palace, Changgyeonggung Palace, and Deoksugung Palace. They are all located in the heart of Seoul. Because of its proximity to Seoul City Hall, Gwanghwamun, and Insa-dong, you can also tour Seoul's other major attractions.

Gyeongbokgung Palace



📍 161 Sajik-ro, Jongno-gu, Seoul
Gyeongbokgung Station (Line 3)
☎ +82-2-3700-3900

Changdeokgung Palace



📍 99 Yulgok-ro, Jongno-gu, Seoul
Anguk Station (Line 3)
☎ +82-2-3668-2300

Deoksugung Palace



📍 97 Sejong-daero, Jongno-gu, Seoul
City Hall Station (Lines 1, 2)
☎ +82-2-771-9951

Changgyeonggung Palace



📍 185 Changgyeonggung-ro, Jongno-gu, Seoul
Hyehwa Station (Line 4)
☎ +82-2-762-4868

Jongmyo



📍 157 Jong-ro, Jongno-gu, Seoul
Jongno 3(sam)-ga Station (Lines 1, 3, 5)
☎ +82-2-765-0195

Information: Museums

Art Museums

National Museum of Modern and Contemporary Art



10 AM – 6 PM (Mon, Tue, Thu, Fri, Sun)
10 AM – 9 PM (Wed, Sat)
Closed: Jan. 1 and Seollal/Chuseok holidays

📍 30 Samcheong-ro, Jongno-gu, Seoul
Gyeongbokgung Station (Line 3) &
Gwanghwamun Station (Line 5)
☎ +82-2-3701-9500

Seoul Museum of Art



10 AM – 8 PM (Tue – Fri)
10 AM – 7 PM (Sat, Sun and holidays)
10 AM – 6 PM (Nov – Feb)

📍 61 Deoksugung-gil, Jung-gu, Seoul
City Hall Station (Lines 1, 2)
☎ +82-2-2124-8800

Buk-Seoul Museum of Art



10 AM – 8 PM (Tue – Fri)
10 AM – 7 PM (Sat, Sun and holidays)
10 AM – 6 PM (Nov – Feb)

📍 1238 Dongil-ro, Nowon-gu, Seoul
Junggye Station & Hageye Station (Line 7)
☎ +82-2-2124-5248~9

Museums

National Museum of Korea



Closed: Jan. 1 and Seollal/Chuseok holidays

📍 137 Seobinggo-ro, Yongsan-gu, Seoul
Ichon Station (Line 4)
☎ +82-2-2077-9000

National Museum of Korea Children's Museum



Closed: Jan. 1 and Seollal/Chuseok holidays

📍 137 Seobinggo-ro, Yongsan-gu, Seoul
Ichon Station (Line 4)
☎ +82-2-2077-9000

National Museum of Korean Contemporary History



Closed: Jan. 1 and Seollal/Chuseok holidays

📍 198 Sejong-daero, Jongno-gu, Seoul
Gyeongbokgung Station (Line 3) &
Gwanghwamun Station (Line 5)
☎ +82-507-1414-9202

National Gugak Center



Closed: Jan. 1 and every Tuesday

📍 2364 Nambusunhwan-ro, Seocho-gu, Seoul
Nambu Bus Terminal Station (Line 3)
☎ +82-2-580-3130

National Hangeul Museum



Closed: New Year's Day and Seollal/Chuseok holidays

📍 139 Seobinggo-ro, Yongsan-gu, Seoul
Ichon Station (Line 4)
☎ +82-2-2124-6200

National Folk Museum of Korea



Closed: Jan. 1 and Seollal/Chuseok holidays

📍 37 Samcheong-ro, Jongno-gu, Seoul
Anguk Station & Gyeongbokgung Station (Line 3)
☎ +82-2-3704-3114

National Folk Museum of Korea Children's Museum



Closed: Jan. 1 and Seollal/Chuseok holidays

📍 37 Samcheong-ro, Jongno-gu, Seoul
Anguk Station & Gyeongbokgung Station (Line 3)
☎ +82-2-3704-3014, 3015

National Palace Museum of Korea



Closed: Jan. 1 and Seollal/Chuseok holidays

📍 12 Hyoja-ro, Jongno-gu, Seoul
Gyeongbokgung Station (Line 3)
☎ +82-2-3701-7500

Seoul Museum of History



Closed: Jan. 1 and every Monday

📍 55 Saemunan-ro, Jongno-gu, Seoul
Gyeongbokgung Station (Line 3)
☎ +82-2-724-0274

Seoul Museum of Craft Art



Closed: Jan. 1 and every Monday

📍 4 Yulgok-ro 3-gil, Jongno-gu, Seoul
Anguk Station (Line 3)
☎ +82-2-6450-7000

Information: Traditional Markets

Namdaemun Market



Namdaemun Market, which boasts a 600-year history, is one of Seoul's attractions with more than 10,000 stores. It sells more than 1,700 products needed for daily life such as clothes, accessories, kitchen tools, folk crafts, foods, general merchandise, etc. It's proximity to the Bank of Korea, Jeongdong-gil, Myeong-dong, N Seoul Tower, and the Namsan Hanok Village makes it a popular destination for foreigners. It is close to Hoehyeon Station (Line 4). Visit the Namdaemun Market website (namdaemunmarket.co.kr) for more information.

Gwangjang Market



Gwangjang Market is a wholesale market that sells fabric, hanboks, women's fashion, subsidiary clothing material, imported clothing, and bedding, etc. We recommend visiting Gwangjang Market if you are interested in traditional hanboks, accessories, and interior. Don't forget to try out the market's specialties such as kkoma gimhap, mung bean pancakes, and makgeolli. It is close to Jongno 3(sam)-ga Station (Lines 1, 3) and Jongno 5(o)-ga Station (Line 1). Visit the Gwangjang Market website for directions, market hours, etc. (gjmarket.org).

Mangwon Market



Mangwon Market sells various street food along with vegetables, fruits, fish, and daily necessities commonly seen in other traditional markets. There are more than 30 stores and is close to Mangwon Station (Line 6).

Tongin Market



Tongin Market which consists of about 80 stores are mostly food-related stores along with some vegetables, fruits, seafood, and clothing stores. It is receiving positive reviews from domestic and overseas visitors through the operation of Tong Lunchbox Café. You exchange money with coins to purchase various foods in the market and eat at the lunchbox café. It is close to Gyeongbokgung Station (Line 3). For more information, visit the Tongin Market website (tonginmarket.modoo.at).

Noryangjin Fisheries Wholesale Market



Noryangjin Fisheries Wholesale Market is Korea's largest fish wholesale market. Various seafood caught in the morning gather here for bidding before it is distributed across the country. This is why you can experience the freshest seafood along with the fun of sightseeing. It is close to Noryangjin Station (Lines 1, 9). More information including hours of operation can be found on the official website (susansijang.co.kr).

Gyeongdong Market



Gyeongdong Market is where about 70% of oriental medicines are distributed. The market was naturally created as farmers from northern Gyeonggi-do and Gangwon-do would bring their produce and harvest. It consists of Seoul Yangnyeong Market located around Jegi-dong, Yongdu-dong, and Jeonnong-dong of Dongdaemun-gu, the Gyeongdong New Market, Gyeongdong Old Market, and Hansol Dong-uibogam. Oriental medicine is mainly traded in the Seoul Yangnyeong Market while ritual goods, ginseng, honey, grains, and vegetables are traded in Gwangseong Market and Gyeongdong New Market. It is close to Jegi-dong Station (Line 1).

Information: Festivals

Seoul is home to various festivals all year-round. Here are some of Seoul's Key festivals.

Seoul Drum Festival



📍 Seoul Plaza (Seoul City Hall)
🏠 www.seouldrum.go.kr/index_en.php

Yeouido Spring Flower Festival



📍 Yeoseo-ro (Yeongdeungpo-gu)
🏠 <http://blossom.or.kr/>

Lotus Lantern Festival



📍 Jogyesa Temple (Jongno-gu)
🏠 <http://www.llf.or.kr/eng/>

Seoul Fringe Festival



📍 World Cup Stadium (Mapo-gu)
🏠 <http://eng.seoulfringefestival.net/>

Hangang Festival



📍 Hangang Park
🏠 <https://english.seoul.go.kr/2022-hangang-river-festival-summer/>

Seoul Street Arts Festival



📍 Downtown Seoul
🏠 <http://www.ssaf.or.kr/en/index>

Itaewon Global Village Festival



📍 Itaewon (Yongsan-gu)
🏠 www.itaewon.or.kr

Seoul International Fireworks Festival



📍 Hangang Park (Yeouido)
🏠 <https://www.hanwhafireworks.com/eng/main.html>

Seoul Beauty Month



📍 Downtown Seoul (e.g. DDP, COEX)
🏠 https://seoulbeautymonth.or.kr/index_en.php

Seoul Lantern Festival



📍 Downtown Seoul (Cheonggyecheon Stream & Gwanghwamun Square)
🏠 <https://www.stolantern.com/en/>

Jeongwol Daeboreum Event of the National Folk Museum of Korea



📍 National Folk Museum of Korea
🏠 <https://www.nfm.go.kr/english/index.do>

Namsangol Lunar New Year Festival



📍 Namsangol Hanok Village
🏠 <https://www.hanokmaeul.or.kr/en>

Seoul Cartoon

SEOUL PLAYLIST

Publisher	Seoul Metropolitan Government
Address	110 Sejong-daero, Jung-gu, Seoul
Planning	Seoul Branding Division of Public Relations Bureau
Editing&Design	LNSCOM
Cartoon Artwork	Choi Seung-chun
Image Courtesy	Official contest winners, Proprietary database
Publication Date	December, 2022
ISBN	979-11-6599-852-3

Copyright © 2022 Seoul Metropolitan Government

All rights reserved. No part of this book may be reproduced or used in any manner without the prior written permission of the publisher.

